

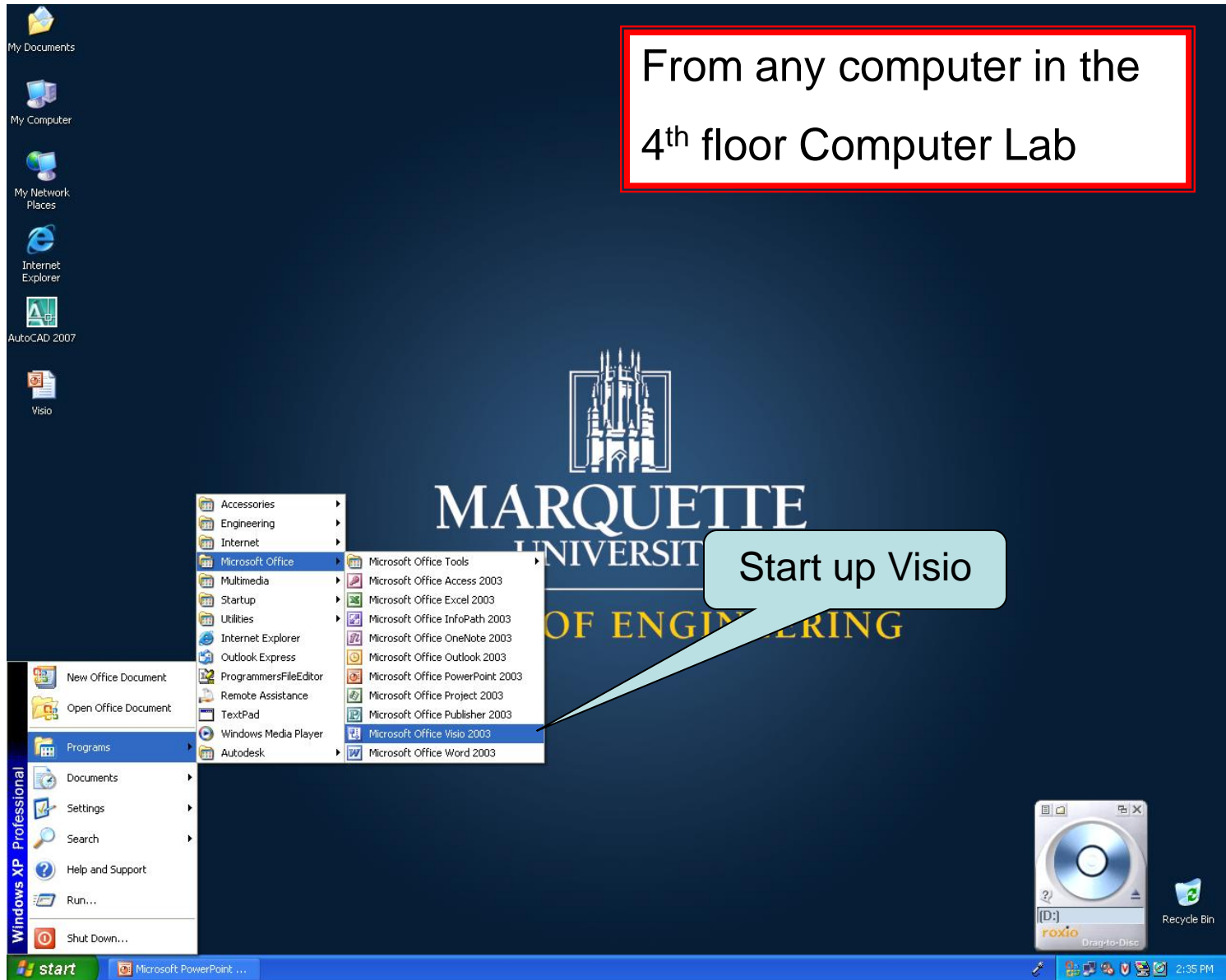
# Using Microsoft Visio



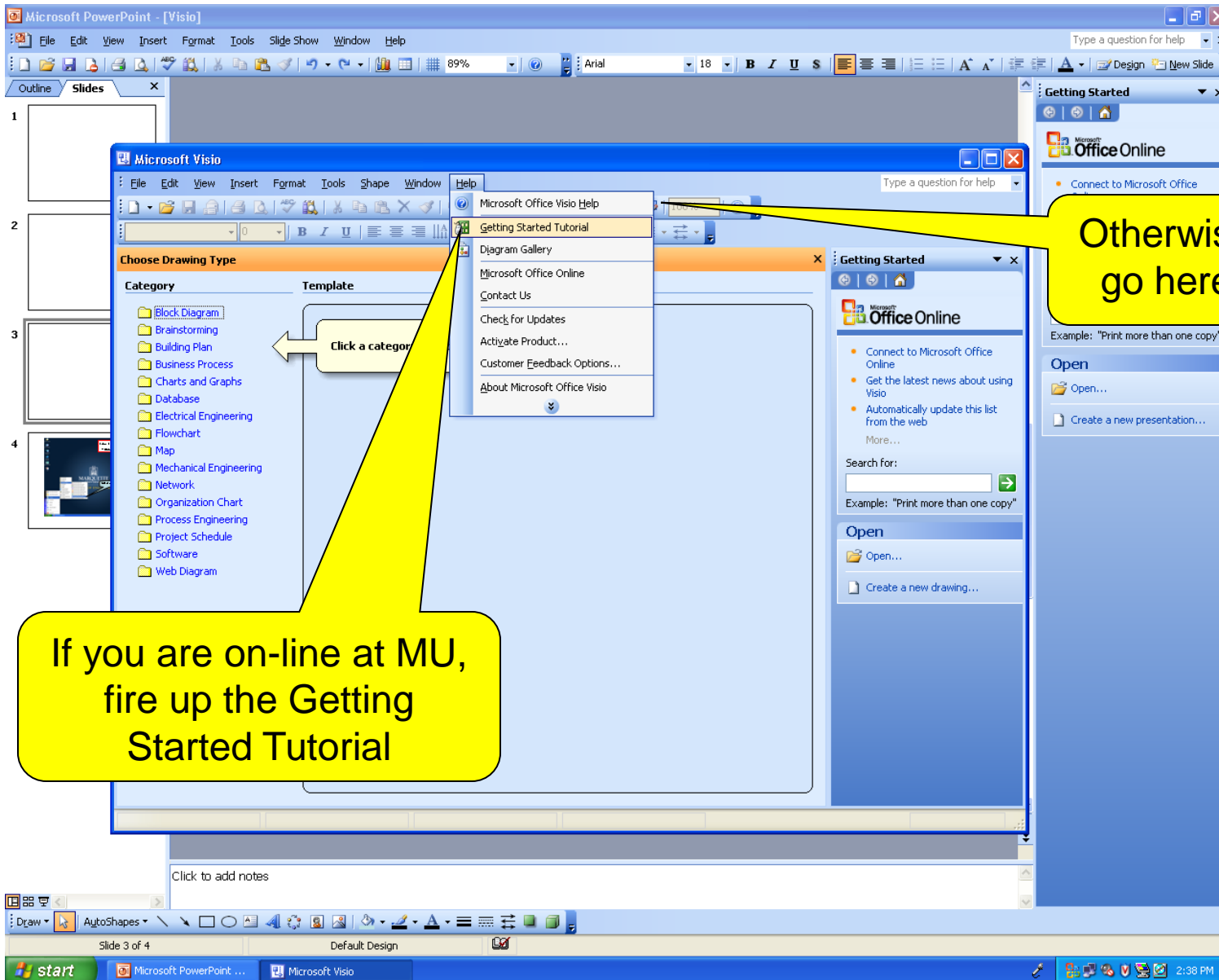
## Using Microsoft Visio

- Our team projects require the preparation of a variety of types of system models.
- For some deliverables, teams will use Microsoft Visio to prepare these documents.
- This package is available on the computers in the 4<sup>th</sup> floor computer lab in the Engineering building.
- In preparation, students unfamiliar with this package may want to run the tutorial.
- It takes about an hour to run through the complete tutorial.

From any computer in the  
4<sup>th</sup> floor Computer Lab



Using Microsoft Visio



If you are on-line at MU,  
fire up the Getting  
Started Tutorial

Otherwise,  
go here.

MSDN Account Request << College of Engineering Technology Services - Windows Internet Explorer

http://coetech.marquette.edu/?page\_id=141

File Edit View Favorites Tools Help

MSDN Account Request << College of Engineering Technology Services

Go here

College of Engineering Technology Services

About Students Faculty & Staff Campus Technology Announcements Contact Us

### MSDN Account Request

Type and Wait to Search

Quick Links

- Student Software
- Laptop Requirements
- Campus IT Services
- E-Marq Email/Calendar
- D2L E-Learning
- CheckMarq Student Information
- MyJob Employee Portal

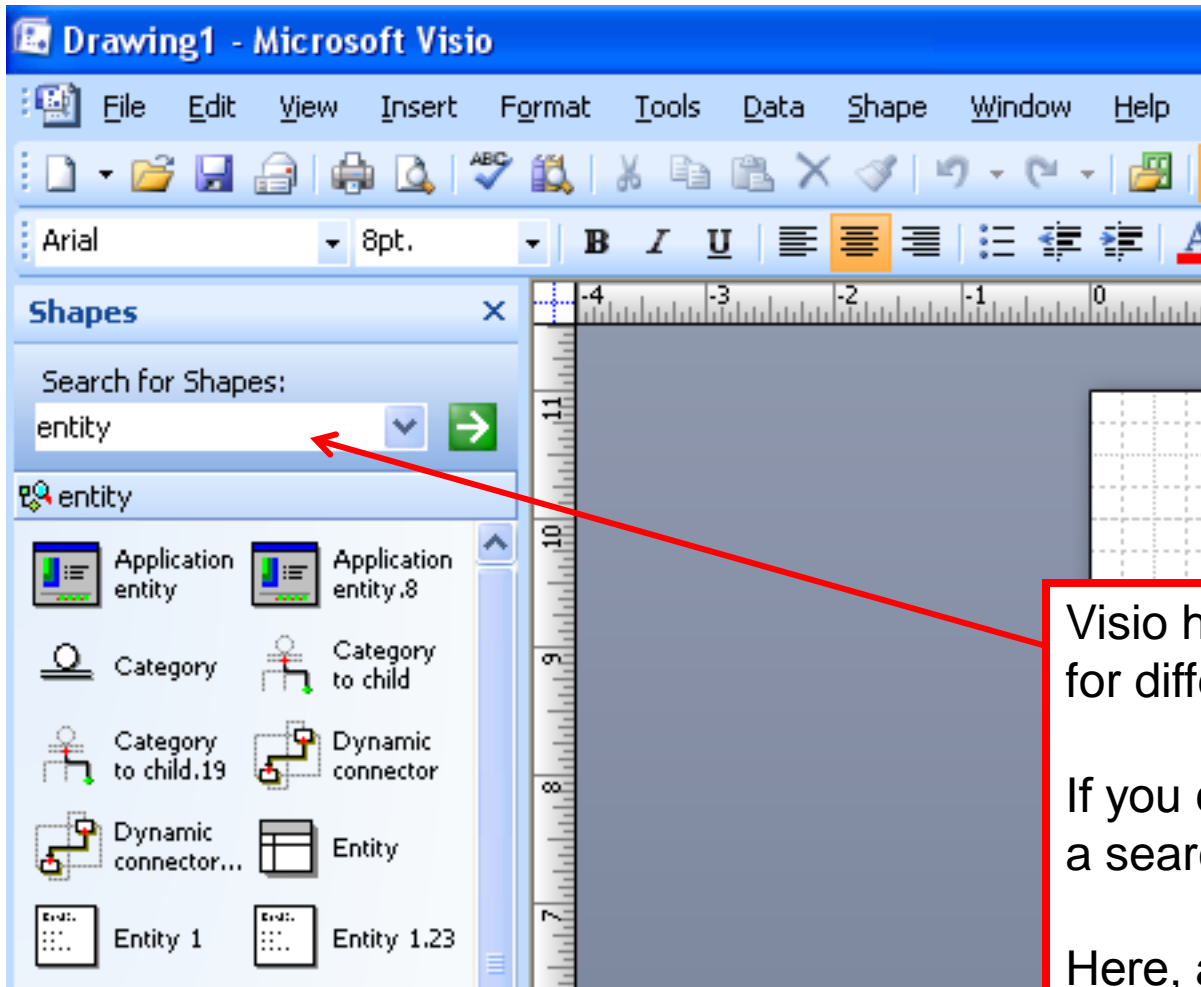
Restricted Login

If you have an MSDN account, you may login [HERE](#). Otherwise, click on the registration information **below**.

Click here once you have an account

Fill this out to get an account

Students can also get Visio loaded onto their computer to do the assignments



Visio has all sorts of templates for different types of diagrams.

If you can't find a template, do a search for a shape.

Here, a search on "entity" found symbols for use with an entity relationship diagram.